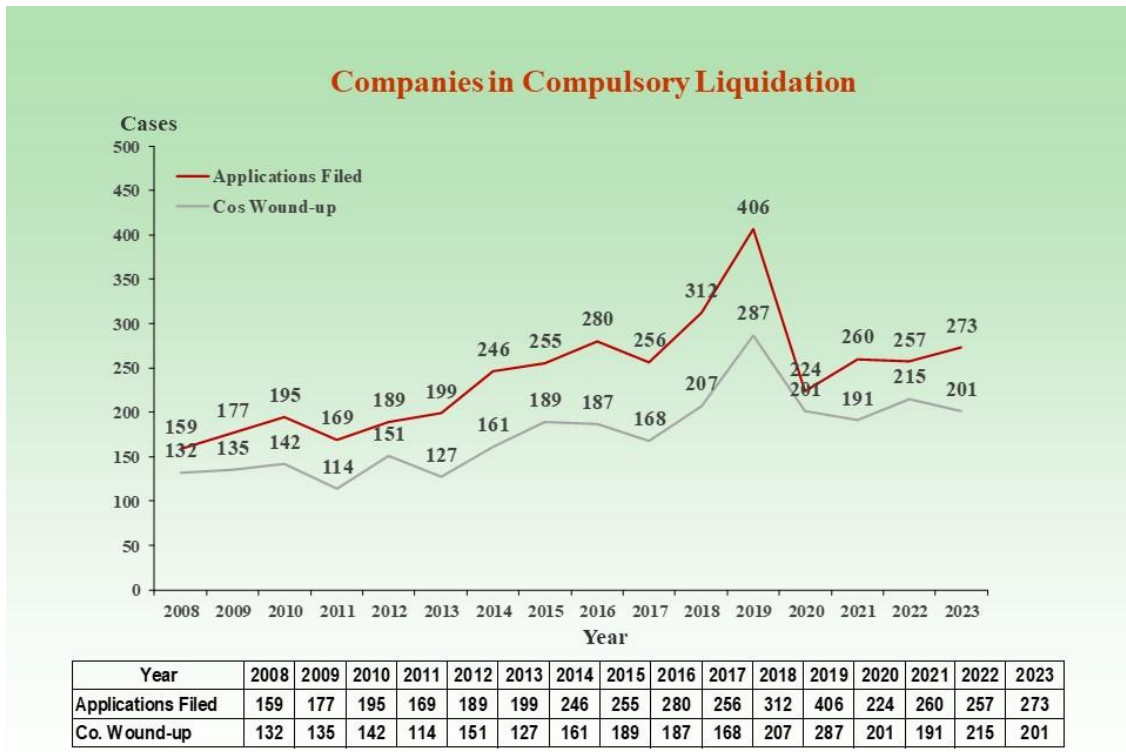
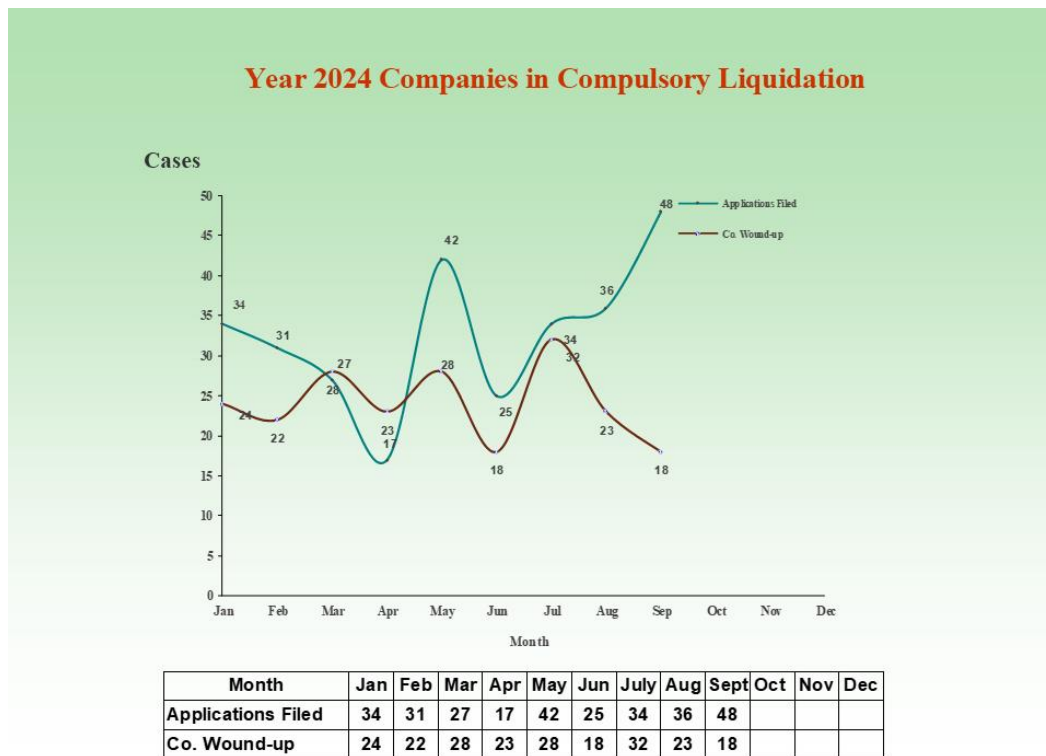


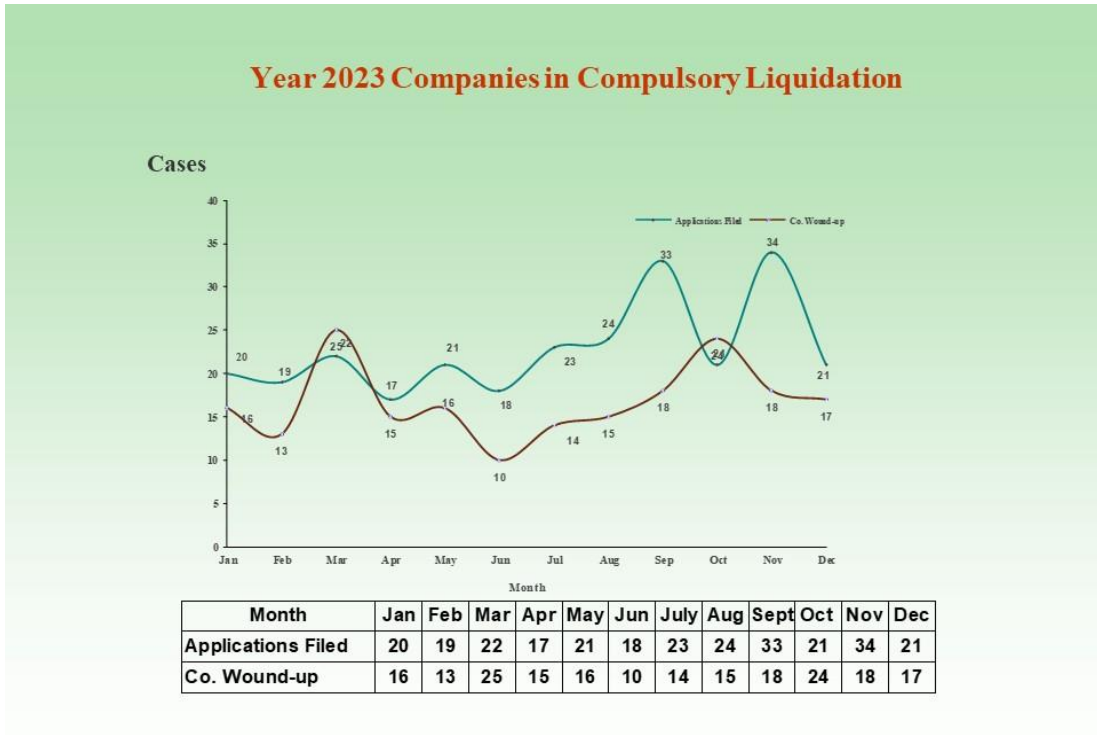
Companies in Compulsory Liquidation



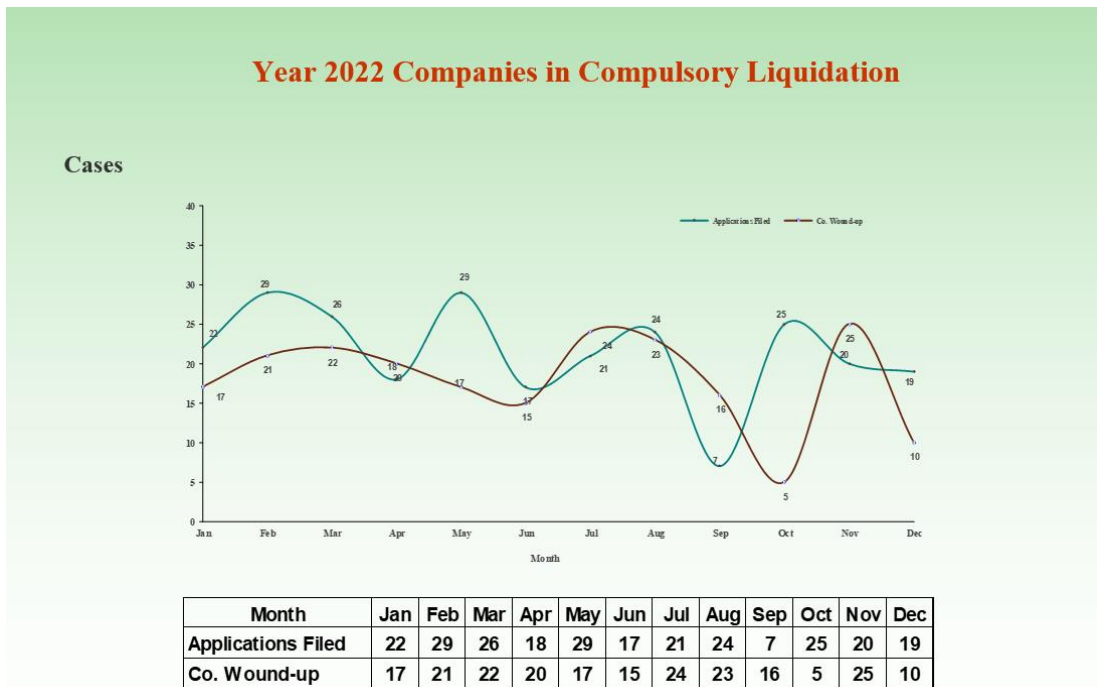
Year 2024 Companies in Compulsory Liquidation



Year 2023 Companies in Compulsory Liquidation



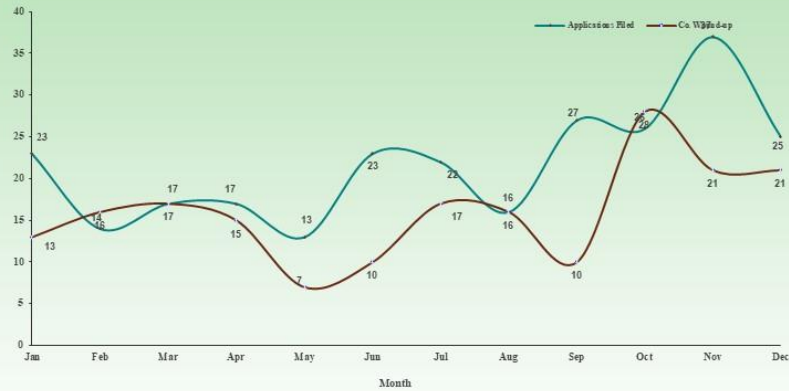
Year 2022 Companies in Compulsory Liquidation



Year 2021 Companies in Compulsory Liquidation

Year 2021 Companies in Compulsory Liquidation

Cases

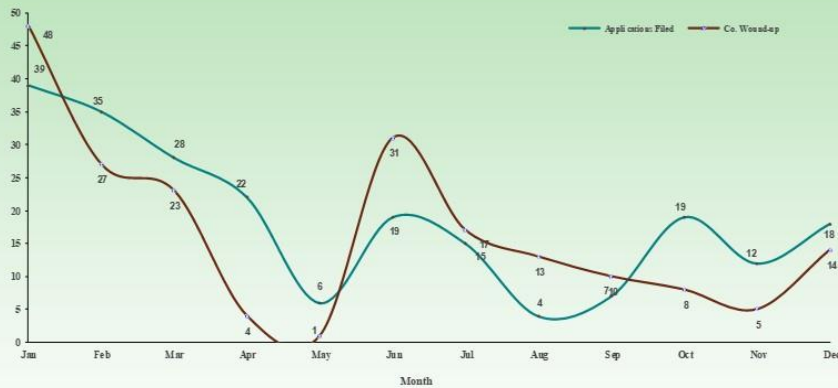


Month	Jan	Feb	Mar	Apr	May	Jun	Jul	Aug	Sep	Oct	Nov	Dec
Applications Filed	23	14	17	17	13	23	22	16	27	26	37	25
Co. Wound-up	13	16	17	15	7	10	17	16	10	28	21	21

Year 2020 Companies in Compulsory Liquidation

Year 2020 Companies in Compulsory Liquidation

Cases



Month	Jan	Feb	Mar	Apr	May	Jun	Jul	Aug	Sep	Oct	Nov	Dec
Applications Filed	39	35	28	22	6	19	15	4	7	19	12	18
Co. Wound-up	48	27	23	4	1	31	17	13	10	8	5	14